

# REMOVING BOUNDARIES

BIG DOORS FROM THE ARCHITECTURAL COLLECTION



## BLUR THE LINE BETWEEN INDOORS AND OUT

How you choose to let air move through a space, how light enters and exits, how freely a person can cross the threshold between the natural world outside and the space designed indoors; all of these feelings require thought, care and most importantly, the right way to express that feeling.





## **BIG DOORS FROM THE ANDERSEN® ARCHITECTURAL COLLECTION**

Big Doors from the Andersen Architectural Collection encapsulate nearly every architectural style, giving you the creative freedom to design truly spectacular spaces that connect the indoors with the out and bring your vision to life.





Photo by: Vance Fox Photography

## BEAUTY IS MORE THAN SKIN DEEP

To successfully open a space to the outdoors with a Big Door, overall design and project needs must be evaluated and taken into consideration before selecting a product.

### DESIGN CONSIDERATIONS

Consider the glass-to-frame ratio and determine how you want to position panels when they are opened.

Hardware should be aesthetically appealing when the door is open or closed. For gliding doors, it should allow the panels to stack flush.





### **FUNCTIONAL CONSIDERATIONS**

Ease of access to the outdoors and transition requirements, including the type of sill system, should be understood before selecting a product.

The amount of effort required to operate the door will vary based on door type so specific occupant needs must be considered.



### **STRUCTURAL CONSIDERATIONS**

New construction walls can be designed to incorporate a pocketing style door while a folding door with a single track is often a better solution for retrofit applications.

Header and structural support over the span of the opening needs to be engineered to accommodate added weight with top hung door systems.



### **PERFORMANCE CONSIDERATIONS**

Local climate and energy-efficiency requirements will greatly impact the big door decision-making process. Daylight, UV protection, glare, solar heat gain and U-Factor are all important to understand and address. Product performance is also important to understand as code requirements may vary by location and building type.

## CREATE SPECTACULAR SPACES WITH ANDERSEN

**MultiGlide™** and **Liftslide** doors open a space to the outdoors with panels that pocket into the wall or stack flush to the side.

**Folding doors** achieve a full indoor/outdoor experience with panels that fold virtually out of sight when opened.

**Pivot doors** are popular for their large panels, contemporary vibe and unique opening architectures.





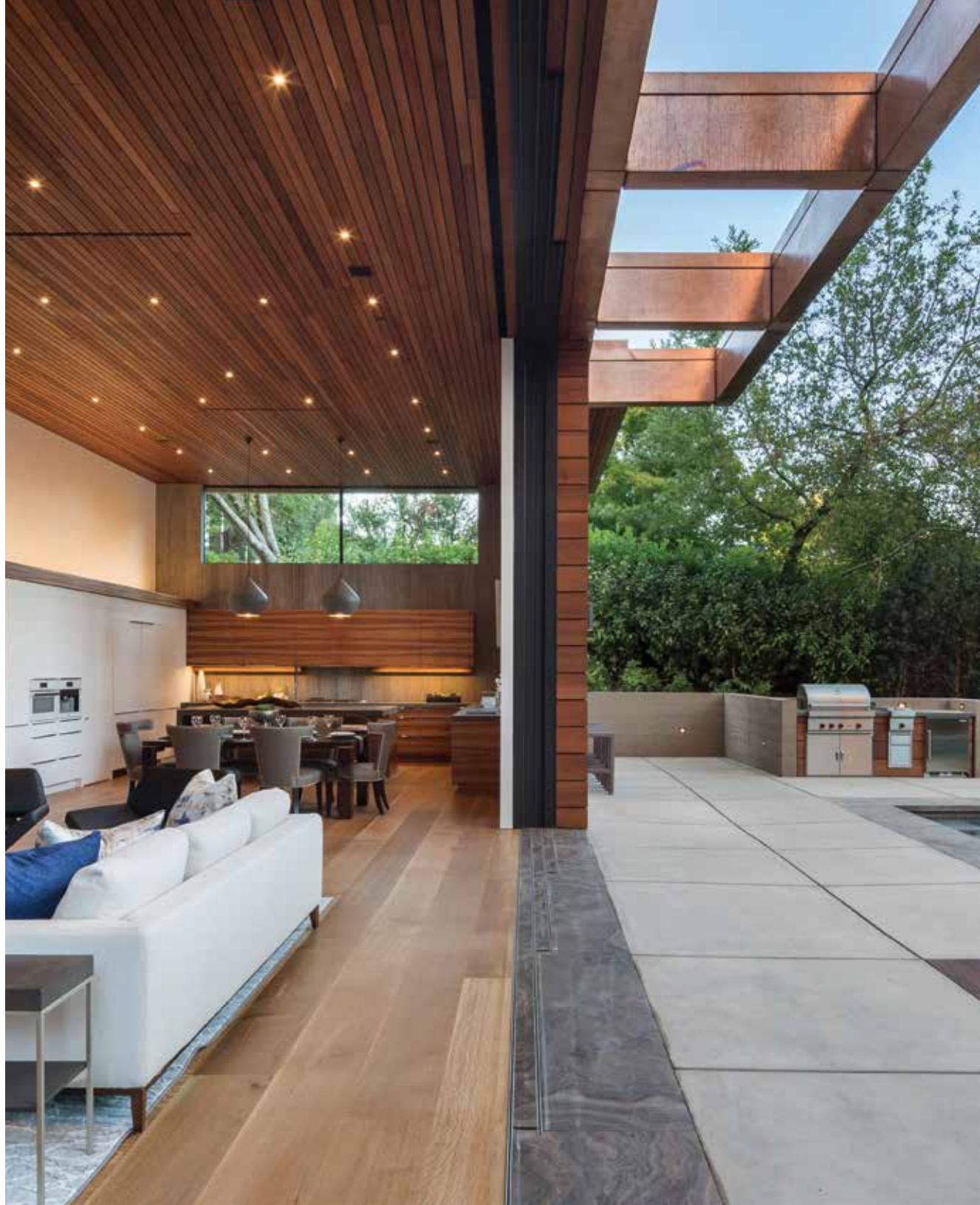
Shown at left: Liftslide door  
 Shown at top: Pivot door  
 Shown at middle: Folding Outswing door  
 Shown at bottom: MultiGlide™ door

## BIG DOOR CONFIGURATIONS

Andersen® Big Doors are available in many configurations, offering unique and creative architectural possibilities.

### POCKETING & STACKING DOORS

If flooring and structural requirements permit, doors can slide discreetly into wall pockets when opened, instilling a sense of wide open space. When pocketing isn't an option, multiple panels can also be stacked in front of each other.





### **PASS-THROUGH WINDOWS** (left)

This space-saving design allows homeowners to entertain more easily by connecting an outdoor deck, pool or patio to the inside of the home while occupying less space than an open door. Folding or gliding operation in traditional or contemporary panel designs fit any architectural style.

### **CURVED DOORS** (right)

Liftslide curved doors are dramatic and iconic, and feature curved panels sliding along a curved track for a unique transition between indoors and out. Minimum radius is 10'.



### **CORNER DOORS**

Corner door configurations create incredibly large openings without the need for a corner post and have the ability to accommodate almost any angle.

## MULTIGLIDE™ DOORS

With contemporary panels that can easily adapt to more traditional designs thanks to wood interiors, MultiGlide doors transform to best fit your vision.

- Contemporary panels available as all aluminum or with an aluminum-clad wood design and feature a 2 3/4" profile
- Traditional panels available with an aluminum-clad wood design and feature 4 11/16" stiles and 4 1 11/16", 8" or 12" bottom rail heights
- Pass-through window design available
- Thermally controlled frame option with aluminum-clad wood panels offers increased thermal performance
- Sleek, low-profile contemporary handle design allows panels to be pocketed into the wall or stacked flush
- Built-in jacking screws enable fine adjustments to the frame during and after installation





### Operation

Continuously adjustable rollers are made with stainless steel ball-bearings and perfectly match the track to minimize vibrations for smooth operation.

Optional automated open/close system available that is UL 325 certified.



Flush Sill  
(Material between rails shown to represent flooring.)

On-Floor Drainage Sill

### Sill Types

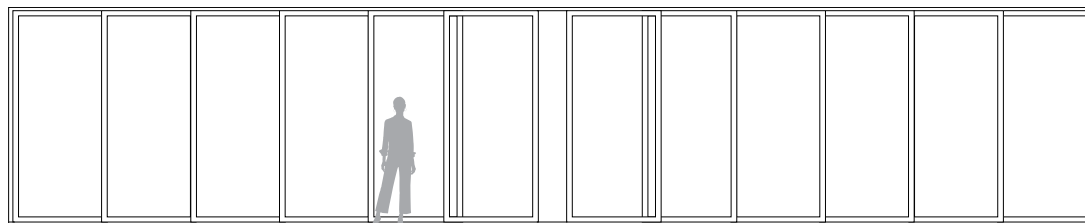
On-floor drainage sill is designed with built-in drainage channels to manage water and is available with interior and exterior ramps. Optional raised threshold enhances performance to a PG30 rating for sizes up to 8' tall\*.

Flush sill designed to project only  $\frac{3}{16}$ " above the finished floor creating a seamless transition from inside to out.

\*S1L-1RS 191" x 95.5" door tested Class LC-PG30.

Fits openings between  
4' 11  $\frac{1}{8}$ " and 50' wide and  
between 4' and 10' tall

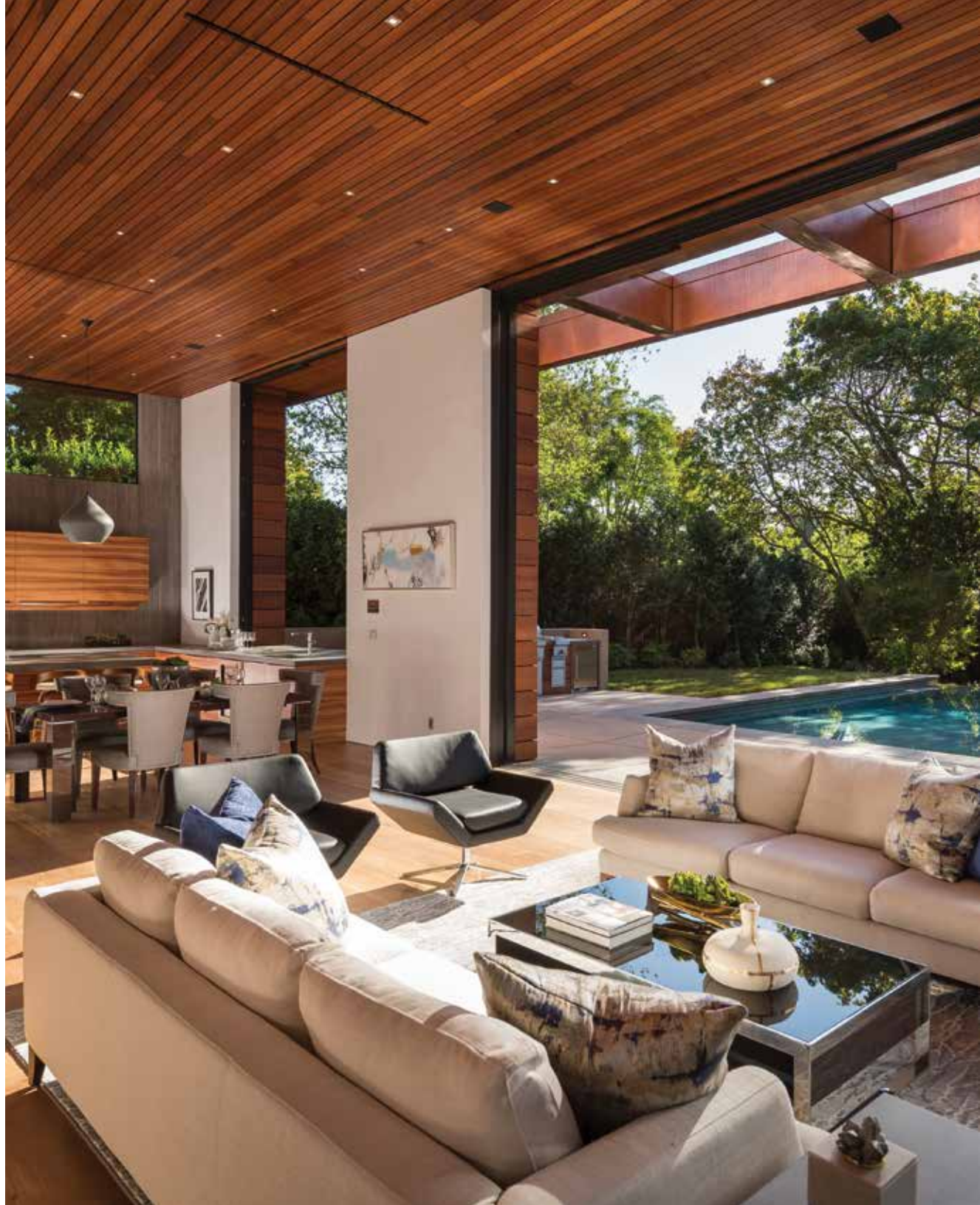
12-Panel configuration  
50' wide x 10' tall  
Two-directional panel operation



## LIFTSLIDE DOORS

Liftslide doors are our premium sliding door with the ability to maximize size and performance. Custom hardware lifts the door panel by engaging the wheels and allowing it to glide smoothly along the flush track.

- Create an expansive view with fewer, bigger panels
- All wood, all aluminum or aluminum wood-clad construction
- Straight, corner, curved and pass-through window designs available
- Impact rated and meets Florida Building Code Product Approvals (FL17559)
- Thermally controlled frame and panels available
- Flush bottom track sits only  $\frac{3}{16}$ " above finished floor
- Multi-point locking system
- Integrated insect screen system available





### Hardware

Hardware lifts the door panel when opening up the door, freeing up contact with the gaskets so there's no friction caused by dragging or wearing of weatherstrip. When the door is closed, the hardware returns the door panels down to a weathertight and secure position. And unlike conventional gliding doors, Liftslide panels only rest on their rollers when hardware is engaged.



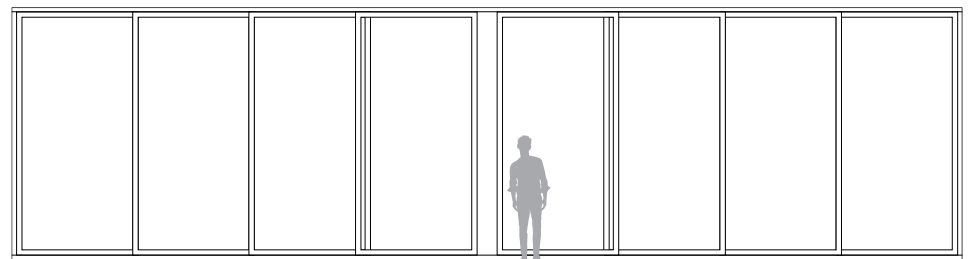
### Sill Types

Flush sill options include a design with transverse drains only or our patented system with transverse drains and full drainage along the tracks. Sills are made of anodized aluminum and sit only  $\frac{3}{16}$ " above the finished floor. Tracks are pre-assembled for easier and more precise installation.



Fits openings between  
60' wide and 16' tall

8-Panel configuration  
60' wide and 16' tall  
Two-directional panel  
operation



## FOLDING OUTSWING DOORS

Large folding doors are an attractive and effective way to achieve the full indoor/outdoor experience with panels that fold virtually out of sight when opened. A good solution for both residential and commercial buildings, folding doors are ideal when there isn't space for wall pockets or more than a single track, yet the largest clear opening possible is desired.

- Aluminum-clad wood construction
- Contemporary panel style available in widths up to 48" wide
- Traditional panel style available in widths up to 39" wide
- Pass-through window design available
- Doors built to fold out when opened and can open to the left, right or from the center to the left and right
- Rated for air, water and structural performance
- Top-hung system allows for easy operation
- FSB® hardware available for a sleek, modern look

®FSB" is a registered trademark of Franz Schneider Brakel GmbH & Co.





### Panels

Folding doors typically cannot have as large of a panel size in comparison to gliding doors and may require more panels to fill the opening. While folding doors offer a maximum amount of clear space when open, when closed the glass-to-frame ratio may reduce available view and light compared to gliding doors.



On-Floor Drainage Sill

### Sill Types

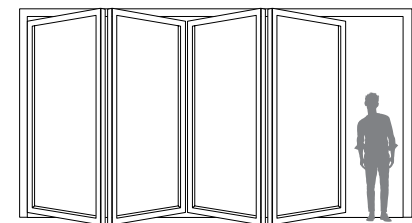
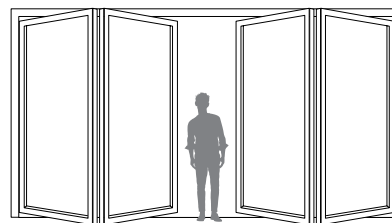
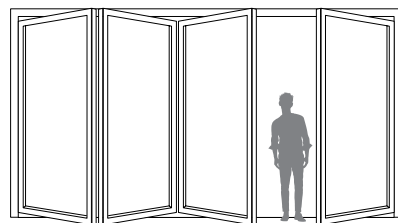
On-floor drainage sill offers a PG40\* rating for sizes up to 24' wide and 8' tall and a PG30 rating for sizes up to 24' wide and 10' tall.

On-floor low-threshold sill and flush sill options provide easy accessibility.

\*Performance rating: Class SP-PG30 size tested 159" x 119.5" for a door with standard sill. Class SP-PG40 size tested 159" x 95.5" for a door with standard sill. Doors with other sill options are not rated.

Fits openings between 3' 3" and 48' wide and between 3' 5 3/8" and 10' tall

4-Panel configuration  
Shown at right: 3L1R  
Shown at middle: 2L2R  
Shown at far right: 4L



## BEEFY BIFOLD DOORS

Maximize large openings with Beefy Bifold doors that have a robust design. Their heavy-duty hardware system supports larger door panels without sacrificing ease of operation, opening a space to the outdoors.

- Panel sizes available up to 5' wide and 13 ½' tall, meaning less obstructions and more view
- All aluminum and aluminum wood-clad panels have rails and stiles that are 3 ½" wide with a thickness of 3 ¾"
- All wood panels up to 10' tall have stiles that are 3 ⅝" wide with a bottom rail height of 7 ¼" and a thickness of 2 ⅝"
- Door jamb is less than 4" in depth and can fit into almost all existing wall conditions
- Top-hung system allows for easy operation
- Center-pivoting design with internal shoot-bolt locking hardware





### Hardware

The Beefy Bifold's heavy-duty hardware system supports larger door panels without sacrificing ease of operation. Because the Beefy Bifold is a center pivot system, the panels fold in and out.

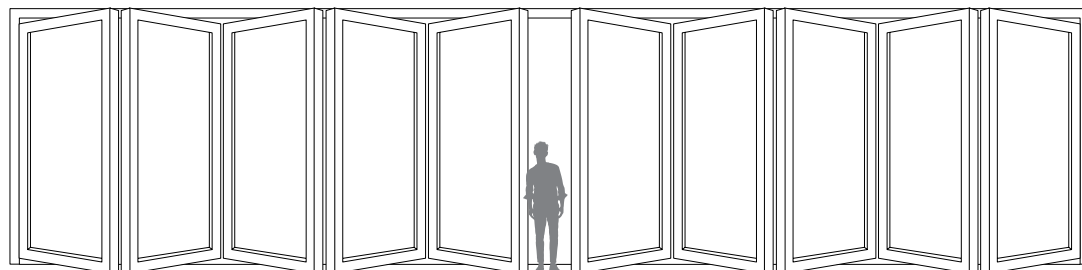


### Sill Types

The bottom track on the Beefy Bifold door system is a U-channel track available with drainage, to keep the weather out. It sits only  $\frac{3}{8}$ " above the finished floor and creates a smooth, low profile transition from indoors to outdoors.

Built to fit openings  
up to 40' wide

10-Panel configuration  
Two-directional (bi-parting)  
panel operation, 5L5R



## PIVOT DOORS

Think bold and non-traditional. Popular for their large panels, contemporary vibe and unique opening architectures, Pivot doors take the indoor/outdoor lifestyle to the next level and make an elegant statement.

- Panel width available up to 9' wide and as tall as 13'
- All wood, all aluminum or aluminum wood-clad construction
- Single- and double-door configurations available
- Single pivot doors allow panels to be built much wider with overall square footage greater than a side-hinged door and provide a seamless, streamlined look with smooth operation
- Double pivot doors operate as two beautifully balanced panels that seem independent of their frame and are a great option when looking for a greater indoor/outdoor connection
- Flush sill creates a seamless transition
- FSB® hardware available for a sleek, modern look

“FSB” is a registered trademark of Franz Schneider Brakel GmbH & Co.





### Operation

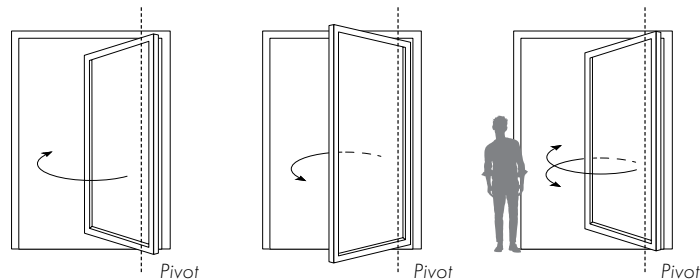
Pivot doors use a mounting system on the sill and head of the door instead of a hinge along the jamb. They rotate on a pivot box, opening in, out or both in and out. The panel size dictates the location of the pivot point – the larger the panel, the more the pivot point will move towards the center with a minimum distance of 4" from the jamb.

### Performance

- LC PG30 certified for single point lock\*
- Water tested per ASTM 331 to 12.11 psf
- Passes air leakage per ASTM #283 at 0.16 cfm/sq. ft.
- NFRC rated for aluminum wood-clad panels
- Impact rated, meets Florida Building Code product approvals (FL22224) and Hallmark certified up to 50 sq. ft.
- CW PG60 certified when multi-point locking activated with single lever handle

\*Up to panel size 5' x 10' and with patented low threshold sill.

Rotating on a pivot box,  
these doors can  
swing in, out or both.



## COMPARISON CHART

Compare features and options across the Andersen® Big Doors portfolio. To see all door options and performance information, visit [andersenwindows.com/doors](https://andersenwindows.com/doors).

	MATERIALS	MAXIMUM DOOR SIZE	MAXIMUM PANEL WIDTH	STILE WIDTH
<b>MULTIGLIDE™ DOORS</b> (shown on page 12)	Aluminum Exterior & Interior Aluminum-Clad Wood (Aluminum Exterior/ Wood Interior)	50' x 10'	60"	Contemporary: 2 1/2" Traditional: 4 11/16"
<b>LIFTSIDE DOORS</b> (shown on page 14)	Aluminum Exterior & Interior Wood Exterior & Interior Aluminum Wood-Clad (Aluminum Exterior/ Wood Interior)	60' x 16'	144"	Aluminum Wood-Clad: 3 1/2" All Wood: 3 5/8"
<b>FOLDING OUTSWING DOORS</b> (shown on page 16)	Aluminum-Clad Wood¹ (Aluminum Exterior/ Wood Interior)	48' x 10'	Contemporary: 48" Traditional: 39"	Contemporary: 3 11/16" Traditional: 4 11/16"
<b>BEEFY BIFOLD DOORS</b> (shown on page 18)	Aluminum Exterior & Interior Wood Exterior & Interior Aluminum Wood-Clad (Aluminum Exterior/ Wood Interior)	40' x 13.5'	60"	Aluminum Wood-Clad: 3 1/2" All Wood: 3 5/8"
<b>PIVOT DOORS</b> (shown on page 20)	Aluminum Exterior & Interior Wood Exterior & Interior Aluminum Wood-Clad (Aluminum Exterior/ Wood Interior)	84 sq. ft. glass	96"	Aluminum Wood-Clad: 3 1/2" All Wood: 3 5/8"

CONFIGURATIONS	ALUMINUM-CLAD WOOD DOOR EXTERIOR COLORS	ALUMINUM DOOR EXTERIOR & INTERIOR COLORS	ANODIZED FINISH OPTIONS	INTERIOR WOOD SPECIES	INTERIOR WOOD FINISHES	INTERIOR PAINTED COLOR OPTIONS	GRILLE TYPES	NOTES
Stacking Pocketing Pass-Through	50 Standard Colors & Custom	6 Standard Colors & 2 Anodized Finishes	7 Anodized Finishes	10 Standard Wood Species <sup>1</sup>	9 Standard Wood Finishes	14 Colors <sup>2</sup>	Full Divided Light  Simulated Divided Light  Finelight™ Grilles- Between-the-Glass	<p>1 Wood interiors are unfinished unless specified. Naturally occurring variations in grain, color and texture of wood make each door one of a kind.</p> <p>2 Interior painted options available on pine. Black and dark bronze are also available on maple. Anodized silver is only available on maple.</p>
Stacking Pocketing Corners Curves Pass-Through	50 Standard Colors & Custom <sup>1</sup>	50 Standard Colors & Custom <sup>1</sup>	2 Anodized Finishes	10 Standard Wood Species <sup>2</sup>	Not Available	Not Available	Full Divided Light <sup>3</sup> Intermediate Stiles & Rails <sup>3</sup>	<p>1 Kynar 500 standard exterior finish meeting AAMA 2605-05 requirements.</p> <p>2 Wood interiors are unfinished. Naturally occurring variations in grain, color and texture of wood make each door one of a kind.</p> <p>3 Grille type available depends upon material used for door.</p>
Folding Outswing Pass-Through	50 Standard Colors & Custom	Not Available	7 Anodized Finishes	10 Standard Wood Species & Custom <sup>2</sup>	Not Available	14 Colors <sup>3</sup>	Full Divided Light  Simulated Divided Light  Finelight Grilles- Between-the-Glass  Removable Interior Grille	<p>1 A wood exterior panel and frame construction is also available as a special product request.</p> <p>2 Wood interiors are unfinished unless specified. Naturally occurring variations in grain, color and texture of wood make each door one of a kind.</p> <p>3 Interior painted options available on pine. Black and dark bronze are also available on maple. Anodized silver is only available on maple.</p>
Folding Outswing or Inswing	50 Standard Colors & Custom	50 Standard Colors & Custom <sup>1</sup>	2 Anodized Finishes	10 Standard Wood Species & Custom <sup>2</sup>	Not Available	Not Available	Full Divided Light <sup>3</sup> Intermediate Stiles & Rails <sup>3</sup>	<p>1 Kynar 500 standard exterior finish meeting AAMA 2605-05 requirements.</p> <p>2 Wood interiors are unfinished. Naturally occurring variations in grain, color and texture of wood make each door one of a kind.</p> <p>3 Grille type available depends upon material used for door.</p>
Inswing and/ or Outswing  Single or double doors	50 Standard Colors & Custom	50 Standard Colors & Custom <sup>1</sup>	2 Anodized Finishes	10 Standard Wood Species & Custom <sup>2</sup>	Not Available	Not Available	Full Divided Light <sup>3</sup> Intermediate Stiles & Rails <sup>3</sup>	<p>1 Kynar 500 standard exterior finish meeting AAMA 2605-05 requirements.</p> <p>2 Wood interiors are unfinished. Naturally occurring variations in grain, color and texture of wood make each door one of a kind.</p> <p>3 Grille type available depends upon material used for door.</p>



Learn more at [andersenwindows.com/bigdoors](https://andersenwindows.com/bigdoors)

"Andersen" and all other marks where denoted are trademarks of Andersen Corporation.  
©2020 Andersen Corporation. All rights reserved. 02/20 Part # 110012